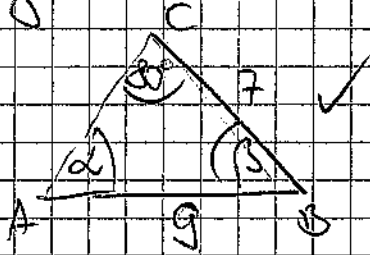


2. Stg A 10b II

1. a,



$$\frac{\sin 80^\circ}{7} = \frac{\sin \alpha}{9}$$

$$\sin \alpha = \frac{9 \cdot \sin 80^\circ}{7} = 0,7660$$

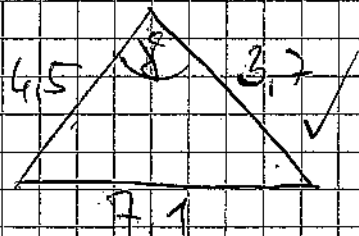
$\alpha = 49,99^\circ \approx 50^\circ < 90^\circ$, weil 80° der größere Winkel ist

$$\beta = 180^\circ - 80^\circ - 50^\circ = 50^\circ$$

$$\Rightarrow b = 7 \text{ cm}$$

4

1. b



γ ist größter Winkel

$$\cos \gamma = \frac{7,1^2 - 4,5^2 - 3,7^2}{-2 \cdot 4,5 \cdot 3,7}$$

$$\gamma = \arccos(-0,4946)$$

$$\gamma = 119,64^\circ$$

$$\frac{3,7}{\sin \alpha} = \frac{7,1}{\sin 119,64^\circ}$$

$$\sin \alpha = \frac{3,7 \cdot \sin 119,64^\circ}{7,1} = 0,4529$$

$$\alpha = 26,93^\circ$$

$$\beta = 33,43^\circ$$

4